



Zebra Basic Configuration

For Units

Nimitz-Lite

Published: 2019-11-19

Table of Contents

Default Configuration-----	3
Step 1: Access Nimitz-Lite-----	3
Step 2: Configure WAN Interface-----	4
Step 3: Configure Routing Table-----	4
Step 4: Enable IP-Forwarding-----	4
Step 5: Change Password-----	4
Step 6: Save Configuration and Exit-----	4
Step 7: Test Configuration-----	4

Default Configuration

Nimitz-Lite



IF1 IF2 IF3 IF4

Username (Default)

nimitz

Password (Default)

nimitz

Please change to something more secure

IF1 (enp1s0)

IP-Address: < Your Public IP | A.B.C.D/xx >
Network: WAN

IF2 (enp2s0)

Static IP Address: 10.0.22.1
Network: LAN

IF3 (enp3s0)

Static IP Address: 10.0.33.1
Network: LAN

IF4 (enp4s0)

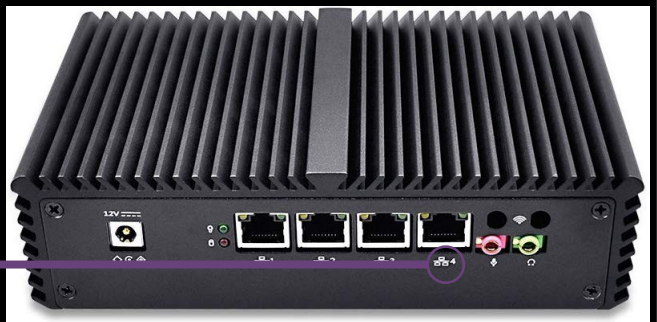
Static IP Address: 10.0.44.1
Network: LAN

Step 1: Access Nimitz-Lite

Connecting Cables



Interface 4



1. Insert cat5 cable into RJ45 connector #4 on Nimitz-Lite.
2. Insert other end of cat5 cable into RJ45 connector on **your PC**.

Telnet

3. Open terminal
4. Enter command
`$telnet 10.0.44.1 2601`

Login

```
Trying 10.0.44.1...  
Connected to 10.0.44.1.  
Escape character is '^]'.  
Hello, this is Quagga (version 1.2.4).  
Copyright 1996-2005 Kunihiro Ishiguro, et al.  
User Access Verification  
Password: < nimitz-lite >
```

Step 2: Configure WAN Interface

Configure Interface	<pre>nimitz> nimitz> enable Password: < nimitz-lite > nimitz# nimitz# configure terminal nimitz(config)# nimitz(config)# interface enp1s0 nimitz(config-if)# nimitz(config-if)# ip address < Public IP Format: A.B.C.D/xx > nimitz(config-if)#</pre>
----------------------------	--

Step 3: Configure Routing Table

Configure WAN Routes	<pre>nimitz(config-if)# exit nimitz(config)# option #1-----> nimitz(config)# ip route 0.0.0.0/0 < ISP's Gateway IP address > or option #2-----> nimitz(config)# ip route 0.0.0.0/0 enp1s0 nimitz(config)#</pre>
Configure LAN Routes	<pre>nimitz(config)# static Interface-----> nimitz(config)# ip route 10.0.22.0/24 enp2s0 static Interface-----> nimitz(config)# ip route 10.0.33.0/24 enp3s0 static Interface-----> nimitz(config)# ip route 10.0.44.0/24 enp4s0 nimitz(config)#</pre>

Step 5: Enable IP Forwarding

IP Forwarding	<pre>nimitz(config)# ip forwarding nimitz(config)#</pre>
----------------------	--

Step 6: Change Default Password

Change Password	<pre>nimitz(config)# password < Your new Password ></pre>
------------------------	---

Step 7: Save Configuration and exit

Save Configuration	<pre>nimitz(config)# write nimitz(config)# exit nimitz# exit</pre>
---------------------------	--

Step 8: Test Configuration

Connect Your Devices	<p>Connect WAN interface to ISP.</p> <p>Connect your PC or device to interface #2, #3 or #4. Setup a static route on your PC.</p>
-----------------------------	---